



GMT MONTHLY MEMBERSHIP PROGRESS REPORT

Results as of: 1/31/2020

Multiple District 23

LOCATION: CONNECTICUT

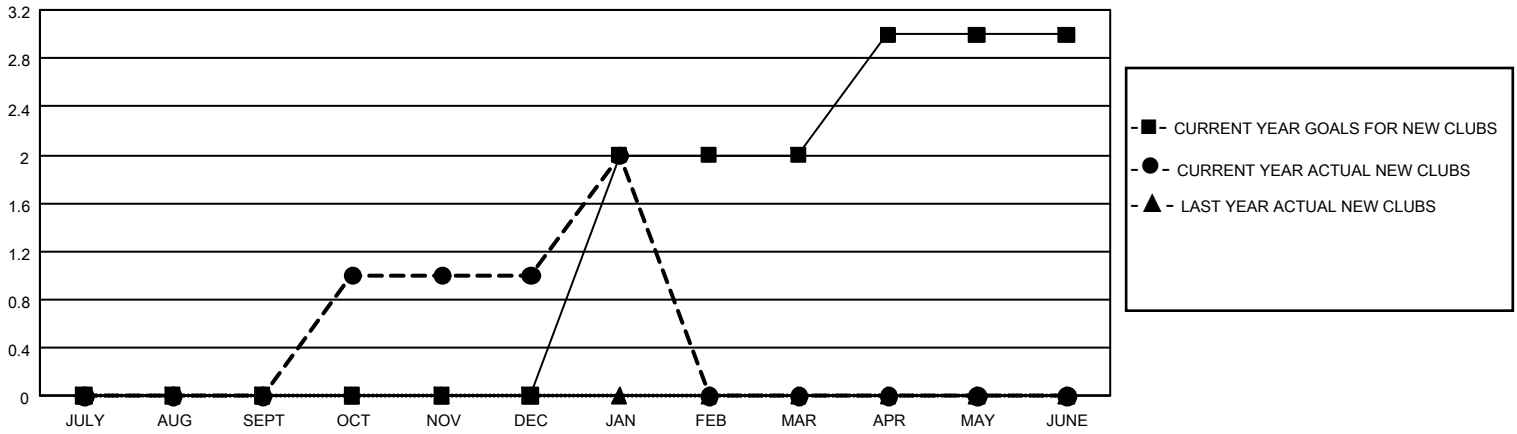
GMT: OPEN

GMT CA 1

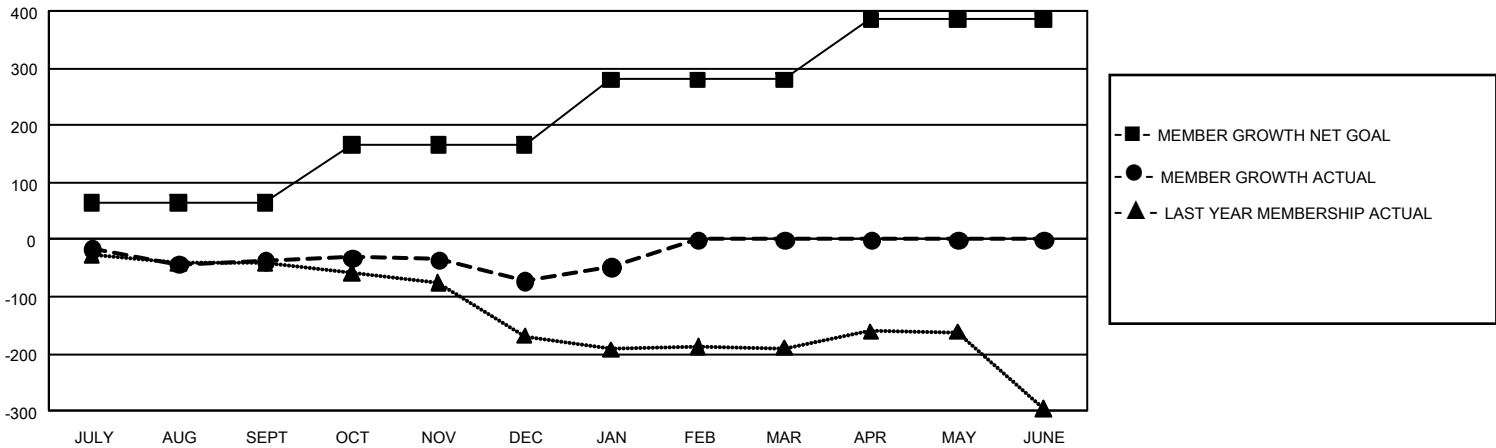
Clubs			
RESULTS FOR 2019-2020			
QUARTER	NEW CLUB GOAL	NEW CLUBS	DROPPED CLUBS
JULY/AUG/SEPT	0	0	1
OCT/NOV/DEC	0	1	1
JAN/FEB/MAR	6	1	1
APR/MAY/JUNE	3	0	0

Members			
RESULTS FOR 2019-2020			
QUARTER	MEMBER GROWTH NET GOAL	MEMBER GROWTH ACTUAL	DROPPED MEMBERS ACTUAL (including transfers)
JULY/AUG/SEPT	195	76	108
OCT/NOV/DEC	300	116	146
JAN/FEB/MAR	345	65	38
APR/MAY/JUNE	315	0	0

GOALS AND ACTUAL NEW CLUBS CUMULATIVE



GOALS AND ACTUAL MEMBERS CUMULATIVE



DROPPED CLUBS: 3	77 CLUBS OF 159 ADDED 1 OR MORE NEW MEMBERS	<u>GENDER DISTRIBUTION</u>	
		MALE 3,080 (64.56%)	FEMALE 1,691 (35.44%)
<u>DROPPED MEMBERS</u>		CLICK HERE FOR CUMULATIVE MEMBERSHIP DATA	
DECEASED 34	CLUB CANCELLED 8	TOTAL FAMILY UNIT MEMBERS 866	
OTHER 250	TOTAL 292	FAMILY MEMBERS PAYING HALF DUES 446	